

Need a Mortgage in principle
to make offers? Call us now
for quick assistance!
0121 775 0101



Do you need to sell?
Start your journey now!
Call us we can help.
0121 775 0101



SCAN FOR MORE INFO
SIZE - 608 Sq Ft
TENURE - Leasehold with 129 Years Remaining
GROUND RENT - Peppercorn
COUNCIL TAX - Solihull Metropolitan Borough Council - B
BROADBAND - Upload Max 1000Mbps Download Max 1000Mbps
MOBILE SERVICES - EE - 84%, Vodafone - 81%, 3 - 79%, 02 - 79%
EPC - D - 63
PARKING - 1 Space to Front & Additional Parking to Rear
FLOODRISK - Very Low
SERVICES - Mains
COVENANTS - N/A

26 Merryfield Close

Solihull, B92 9PW
Offers in the Region of £170,000

Situated in a cul-de-sac, this ground floor maisonette presents an excellent opportunity for first-time buyers and investors alike. This property is a wonderful blend of comfort, convenience and community, making it a must-see for anyone looking to settle in a desirable area.

FEATURES

- Ground Floor Maisonette
- Ideal First Time Buyer or Investor Opportunity
- Lounge/Dining Room
- Kitchen with Access to the Garden
- Two Double Bedrooms
- Family Bathroom
- Private Rear Garden
- Shared Parking Bay to Front
- Additional Parking to Rear
- Convenient Location

Are you an investor
interested in expanding your
portfolio?

Call 0121 775 0101 to provide your investment criteria for alerts.



SCAN TO **VIEW OUR**
WEEKLY FILMS &
SUBSCRIBE

Sneak Peeks

Every week, we unveil "Sneak Peeks," a feature showcasing exclusive properties before they hit Rightmove and other platforms.

The Landlord Club

Join our Landlord Club for weekly updates on legislation, market trends, and our Letting Director's 'Investment Pick of the Week' for optimal ROI.

HTSPMD

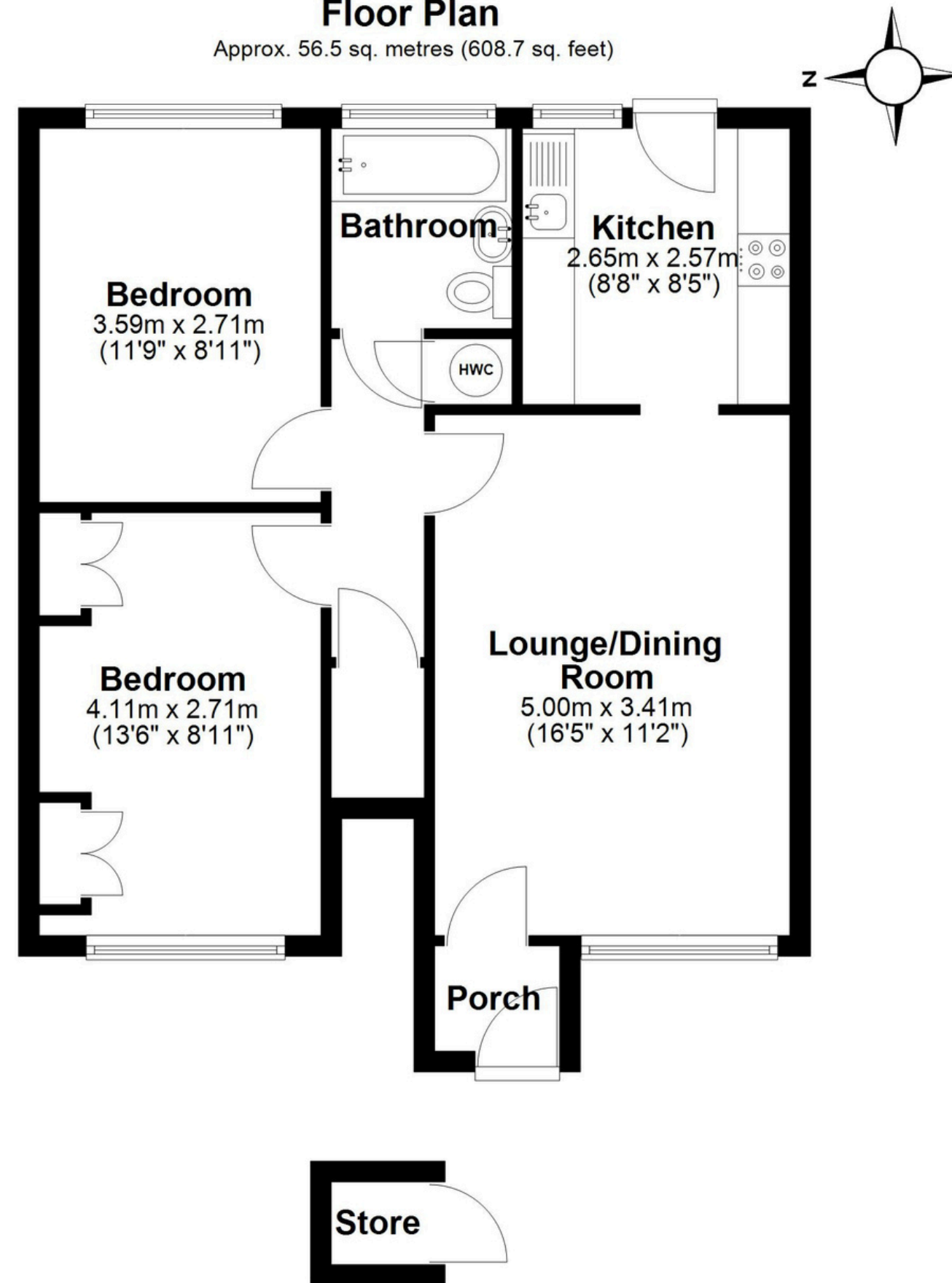
Tune into 'How's The Solihull Property Market Dom' weekly for a quick, insightful snapshot of the market.

The Mortgage Update

Get weekly insights and the best deals with our Mortgage Update, your shortcut to navigating the complex mortgage landscape confidently.

Floor Plan

Approx. 56.5 sq. metres (608.7 sq. feet)



Total area: approx. 56.5 sq. metres (608.7 sq. feet)

This floor plan is for illustration purposes only, this is not intended to be a measured/scaled survey or comply with RICS guidelines. All measurements (including total floor area) openings, orientation and floor area are approximate. No details are guaranteed, they cannot be relied upon for any purpose and do not form part of any agreement. A party must rely upon its own inspection(s). No responsibility is taken for any error, omission, or mis-statement. Plan produced using PlanUp.